

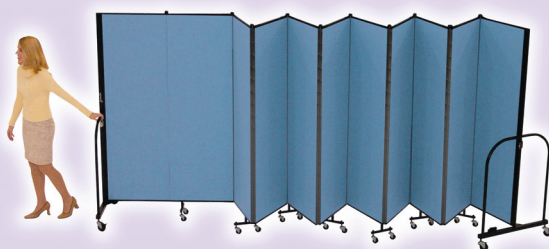


**Lifetime  
Warranty**

**simply the world's most versatile portable room dividers for churches!**



Roll into position



Unlock and pull open



Position as desired

**IMAGINE...**Freestanding™ dividers  
where you need them, when you need them.  
Dividers totally free of any exterior connections.  
No complicated or limiting track systems, no  
interference with your church's heat, light,  
and ventilation systems. Dividers that provide  
you unlimited dividing possibilities!

- Lifetime Warranty
- No Assembly or Installation Required
- Caster Wheels...Making Portability Easy
- Sound Absorbing Divider Panels
- Black Powder Painted Metal Trim, Hinges and Caster Covers
- Tackable Divider Surfaces
- DuPont Teflon® fabric protector



**Create temporary classrooms  
anywhere, anytime**  
Easily divide any area for any reason  
**Use for day care during the week and  
religious education on the weekend**  
"Instant" bulletin boards  
**Gain the classrooms you need in  
spaces you already have**

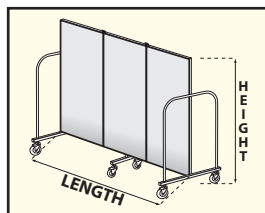


**VISIT OUR WEBSITE AT [WWW.CEDIVIDERS.COM](http://WWW.CEDIVIDERS.COM)**

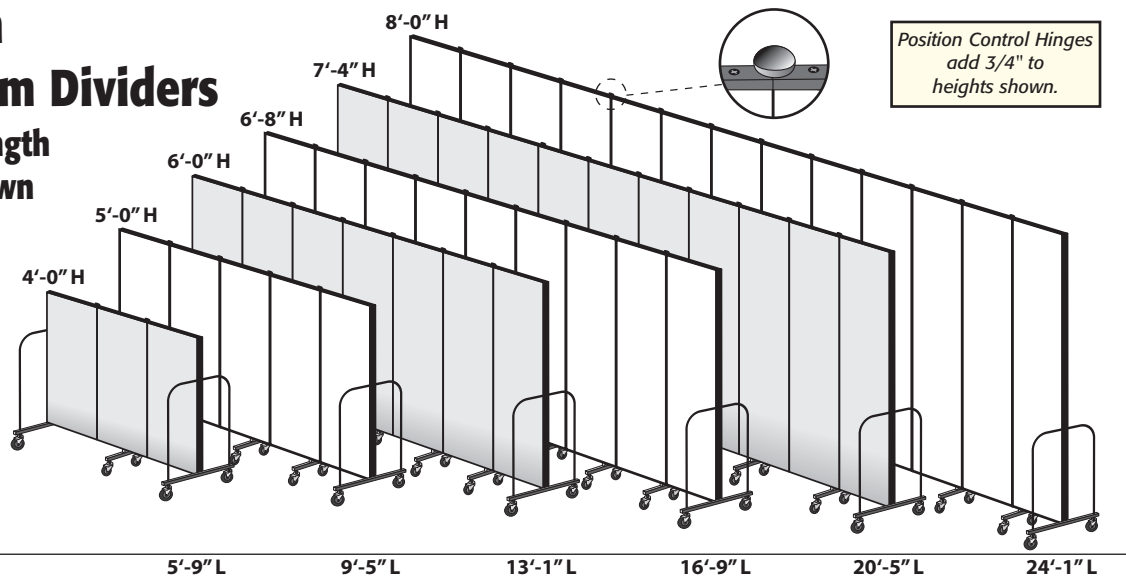


# Commercial Edition FREEstanding™ Room Dividers

Available in Any Height, Length  
and Color Combination Shown

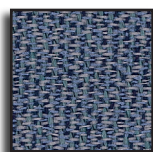


**NOTE:** Standard Dividers can be connected in any combination to provide any length you require.



## Commercial Edition Fabric And Vinyl Colors

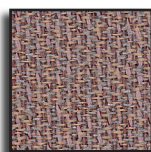
Guilford of Maine Lido II (83% Polyester, 17% Olefin; Crepe Weave)



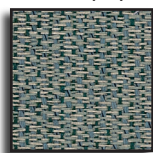
BLUE (CB)



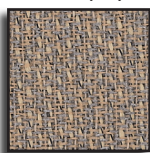
GREY (CG)



MAUVE (CM)



GREEN (CN)

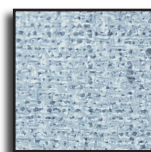


OATMEAL (CO)



WHEAT (CW)

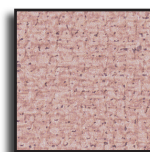
Gentex® Commercial Vinyl Wallcovering by Omnova Solutions Inc.



BLUE TIDE (VB)



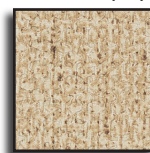
GRANITE (VG)



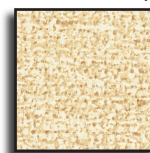
RASPBERRY MIST (VM)



MINT (VN)



SANDALWOOD (VO)



HAZELNUT (VW)

## Standard Features



Innovative Self Leveling Casters



Position Control Hinges  
secure panels in place

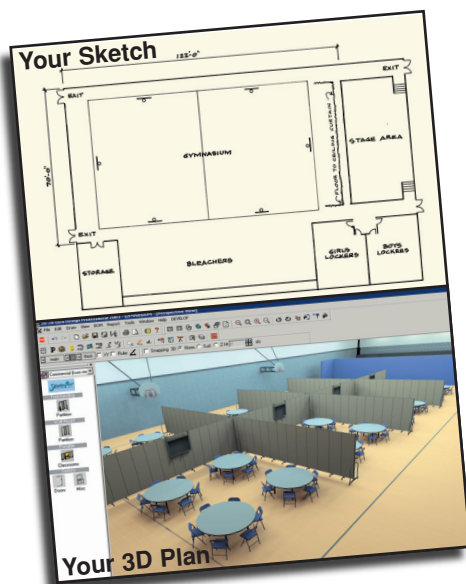


Storage Latches secure  
the panels when closed



Divider fabrics  
protected with Teflon®

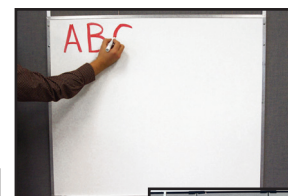
## Commercial Edition Options



PanelLocks™ provide  
long-term positioning  
of the panels.  
Locks the panels in  
any position.



MultiUnit Connectors  
join standard  
length dividers  
into longer lengths.  
(1 set per unit)



36"H x 42"W  
Markerboard or  
Chalkboard  
with adjustable  
strap hangers.

Free 3D space  
planning service  
available using GIZA.  
Please contact your dealer.